

# ScaleRCHelis.com Light Controller Mac Driver Install



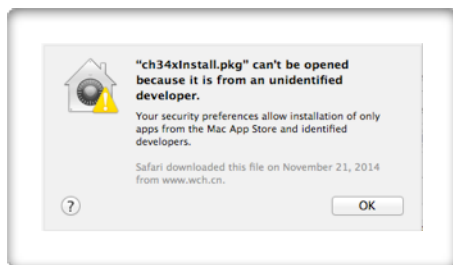
## **Mac OSX driver install:**

Download the Mac Driver here:

[http://www.scalerclights.com/downloads/CH34x\\_Install.zip](http://www.scalerclights.com/downloads/CH34x_Install.zip)

Unzip the downloaded file, open the folder and find the file ch34x\_Install.pkg and double click it.

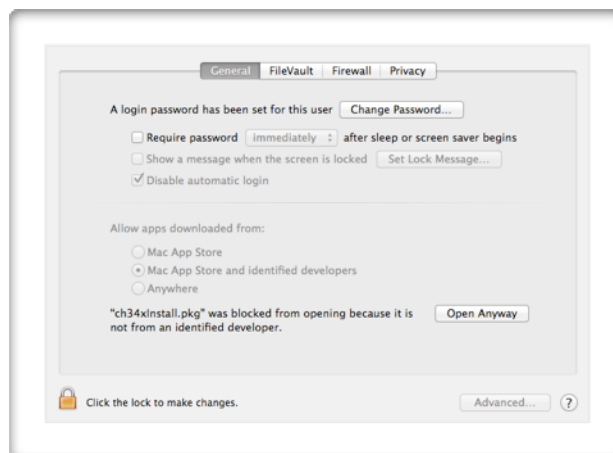
You will may be presented with the following screen:



This means the installer is from an unidentified developer but we verify it is from the manufacturer right above the OK button. Click OK. The Warning will now disappear and nothing will happen. This is because the Mac GateKeeper has blocked the install.

We are now going to allow the install of this driver and nothing else that should be blocked by the GateKeeper.

Go to System Preferences, then Security and you will see this page:



At the bottom we verify that is install package (ch34x\_install.pkg) is being blocked, all

## ScaleRCHelis.com Light Controller Mac Driver Install



we do is click the Open Anyway button to allow the install. The installer will now open and allow you to proceed with the driver install. This will take a few minutes to complete.

**Once finished re-boot your Mac to finish the install.**

### **Install the Guino Dashboard:**

Download GUINO for Mac from the left side of our web page. Unzip the files and drag the GUINO folder to your Applications folder. You can now go into the GUINO folder and drag the GUINO icon to your desktop or Dock for easy access.

You are now ready to connect to the light controller. Please download the User Manual for Connection instructions and programming.